

# MEDICAL OFFICE SPACE FOR LEASE



## WHAT MATTERS TO YOU...



### SIZE

CLASS A MEDICAL OFFICE BUILDING WITH OVER 15 SYNERGISTIC MEDICAL AND DENTAL PRACTICES

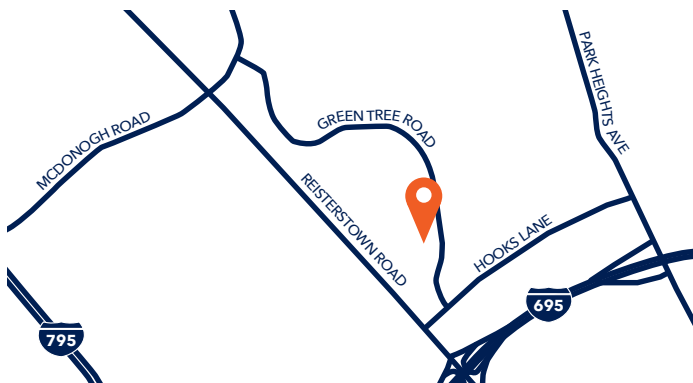


### AMENITIES

ADJACENT TO A STRONG AMENITY BASE INCLUDING TRADER JOE'S, STARBUCKS, RESTAURANTS, BANKS, AND MANY OTHER NOTABLE RETAILERS

## WOODHOLME MEDICAL CENTER

1838 GREENE TREE ROAD  
PIKESVILLE, MARYLAND 21208



LEASED BY



OWNED AND MANAGED BY

**Hines**

## ADDITIONAL FEATURES

- Parking ratio of 4.6 spaces per 1,000 SF leased with 567 spaces available
- Located directly off the Baltimore Beltway (I-695) in the affluent Pikesville / Owings Mill submarket
- Easily accessible by public transportation
- Suites available:
  - Suite 100 - 1,339 SF
  - Suite 350 - 4,710 SF
  - Suite LL12 - 4,119 SF
  - Suite LL00 - 3,047 SF

CONTACT US TODAY

**ADRIAN A. DOMINGUEZ**  
ADRIAN@GZREALTY.NET

**J. WINSTON WILLIAMS, III**  
WINSTON@GZREALTY.NET

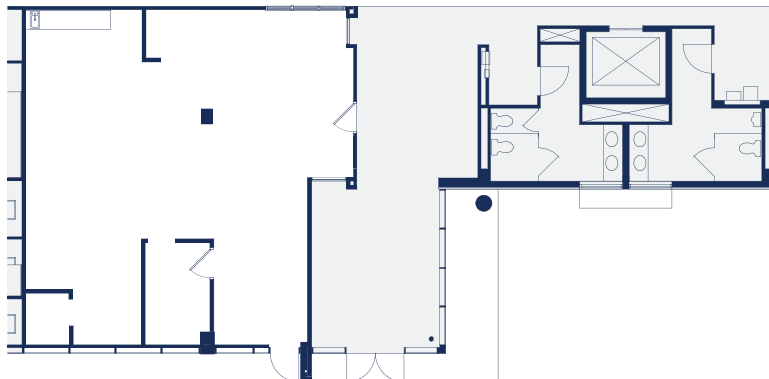
**PETER G. PAPANTONIOU**  
PETER@GZREALTY.NET

3 Bethesda Metro Center, Suite 700 // Bethesda, MD 20814  
301.235.1300 // gzrealty.net

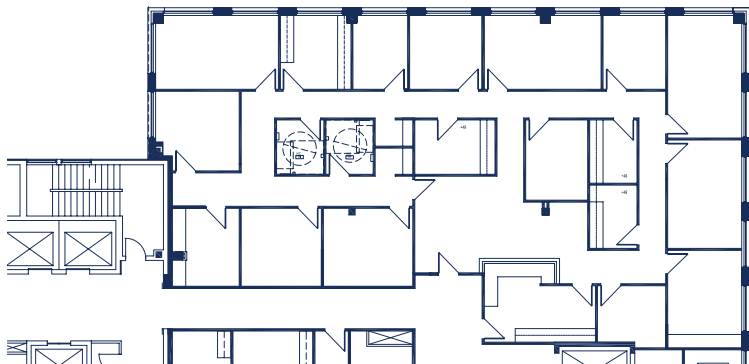
# WOODHOLME MEDICAL CENTER

1838 GREENE TREE ROAD  
PIKESVILLE, MARYLAND 21208

## SUITE 100 | 1,339 SF



## SUITE 350 | 4,710 SF



CONTACT US TODAY

**ADRIAN A. DOMINGUEZ**  
[ADRIAN@GZREALTY.NET](mailto:ADRIAN@GZREALTY.NET)

**J. WINSTON WILLIAMS, III**  
[WINSTON@GZREALTY.NET](mailto:WINSTON@GZREALTY.NET)

**PETER G. PAPANTONIOU**  
[PETER@GZREALTY.NET](mailto:PETER@GZREALTY.NET)

3 Bethesda Metro Center, Suite 700 // Bethesda, MD 20814  
301.235.1300 // [gzrealty.net](http://gzrealty.net)

LEASED BY



OWNED AND MANAGED BY

**Hines**