

MEDICAL OFFICE SUITE FOR SALE



WHAT MATTERS TO YOU >

LOCATION

LOCATED ON THE CAMPUS OF STONE SPRINGS HOSPITAL, WITH DIRECT ACCESS TO THE HOSPITAL

CONVENIENCE

2680 RSF MOVE-IN READY, BUILT-OUT MEDICAL SPACE

24430 STONE SPRINGS BLVD

SUITE 375
DULLES, VA 20166

ADDITIONAL FEATURES

- Move-in ready medical space, recently constructed with high-end finishes
- Great opportunity for a medical practice to move right in and start practicing immediately
- Built out medical suite available with spacious waiting room with natural sunlight, check in/check out, 7 exam rooms/offices, lab with sink, 2 ADA bathrooms, kitchenette, Manager office and second means of egress
- Ample free surface parking conveniently located adjacent to the building
- Covered building entry provides convenient patient drop off and pick up
- Many nearby amenities, including Stone Ridge Village Center and South Riding Market Square



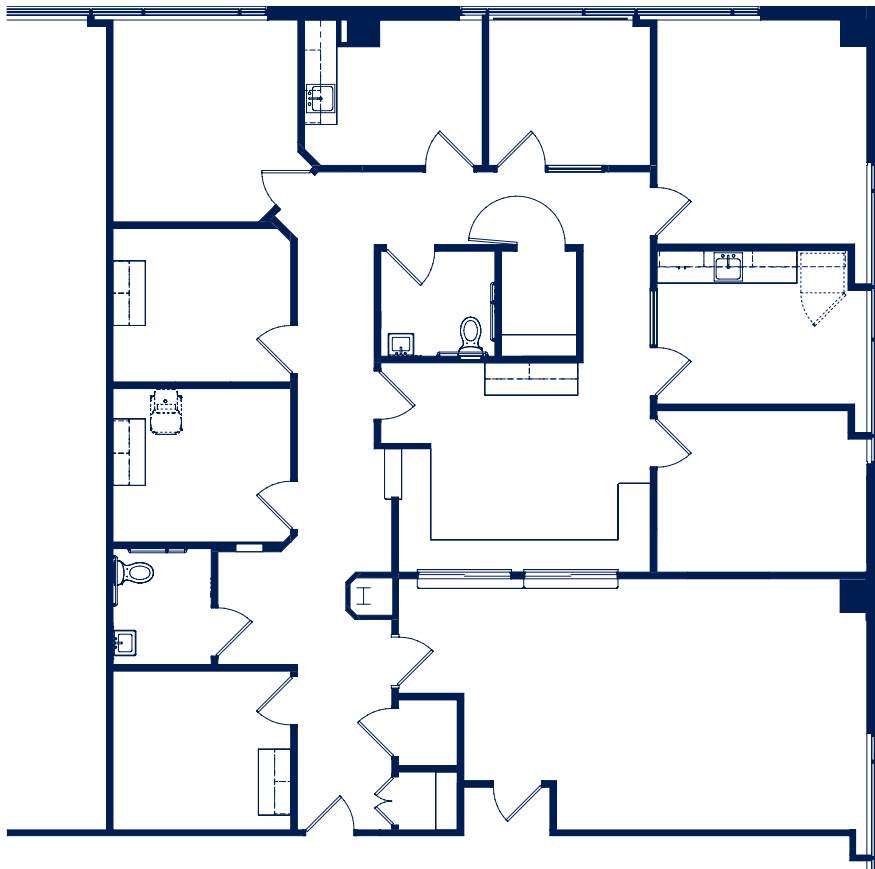
3 Bethesda Metro Center, Suite 700 // Bethesda, MD 20814
301.235.1300 // gzrealty.net

CONTACT US TODAY

MICHAEL H. FRIEDLANDER
MICHAEL@GZREALTY.NET

ANDREW PAPANTONIOU
ANDREW@GZREALTY.NET

Suite 375 | 2,680 RSF



3 Bethesda Metro Center, Suite 700 // Bethesda, MD 20814
301.235.1300 // gzrealty.net

CONTACT US TODAY

MICHAEL H. FRIEDLANDER
MICHAEL@GZREALTY.NET

ANDREW PAPANTONIOU
ANDREW@GZREALTY.NET