

MEDICAL OFFICE SUITE FOR LEASE

PHYSICIAN
OFFICES

WHAT MATTERS TO YOU >

LOCATION

LOCATED ON THE CAMPUS OF STONE
SPRINGS HOSPITAL, WITH DIRECT
ACCESS TO THE HOSPITAL

CONVENIENCE

4,605 RSF MOVE-IN READY,
BUILT-OUT MEDICAL SPACE

24430 STONE SPRINGS BLVD

SUITE 500
DULLES, VA 20166

ADDITIONAL FEATURES

- Move-in ready medical space, recently constructed with high-end finishes
- Great opportunity for a medical practice to move right in and start practicing immediately
- Built-out medical office with waiting area, reception, multiple exam rooms, multiple offices, break room, nurses stations, 3 restrooms, plenty of storage, 2 Imaging/procedure rooms with equipment available (Camera for cardiac imaging, ultrasound, echo cardiology, and stress testing room)
- Ample free surface parking conveniently located adjacent to the building
- Covered building entry provides convenient patient drop off and pick up
- Many nearby amenities, including Stone Ridge Village Center and South Riding Market Square



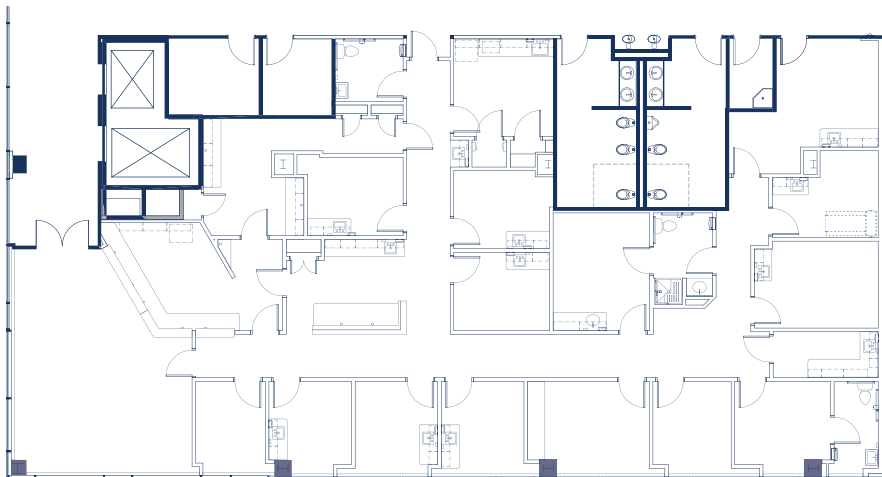
3 Bethesda Metro Center, Suite 700 // Bethesda, MD 20814
301.235.1300 // gzrealty.net

CONTACT US TODAY

ALEXA GITTLESON SICKELS
ALEXA@GZREALTY.NET

ANDREW PAPANTONIOU
ANDREW@GZREALTY.NET

Suite 500 | 4,605 RSF



3 Bethesda Metro Center, Suite 700 // Bethesda, MD 20814
301.235.1300 // gzrealty.net

CONTACT US TODAY

ALEXA GITTLESON SICKELS
ALEXA@GZREALTY.NET

ANDREW PAPANTONIOU
ANDREW@GZREALTY.NET