

MEDICAL OFFICE SPACE FOR SALE OR LEASE



WHAT MATTERS TO YOU >

LOCATION

OFF OF I-270, CLOSE PROXIMITY
TO HOLY CROSS GERMANTOWN HOSPITAL
AND ADVENTIST HEALTHCARE
GERMANTOWN EMERGENCY CENTER

SIZE

7,896 RSF

TREVION CORPORATE PARK

12800 MIDDLEBROOK RD, SUITE 206
GERMANTOWN, MD 20874

ADDITIONAL FEATURES

- Built out medical space with waiting area, reception, large conference room, multiple offices, 3 ADA restrooms, lab area, 10 exam rooms. This is a great opportunity for a turn-key medical office that is move-in ready.
- Served by public bus transportation and close to the Germantown MARC Train Station.
- Ample parking available for both patients and staff
- Nearby retail amenities including shopping, banking, restaurants and hotels.



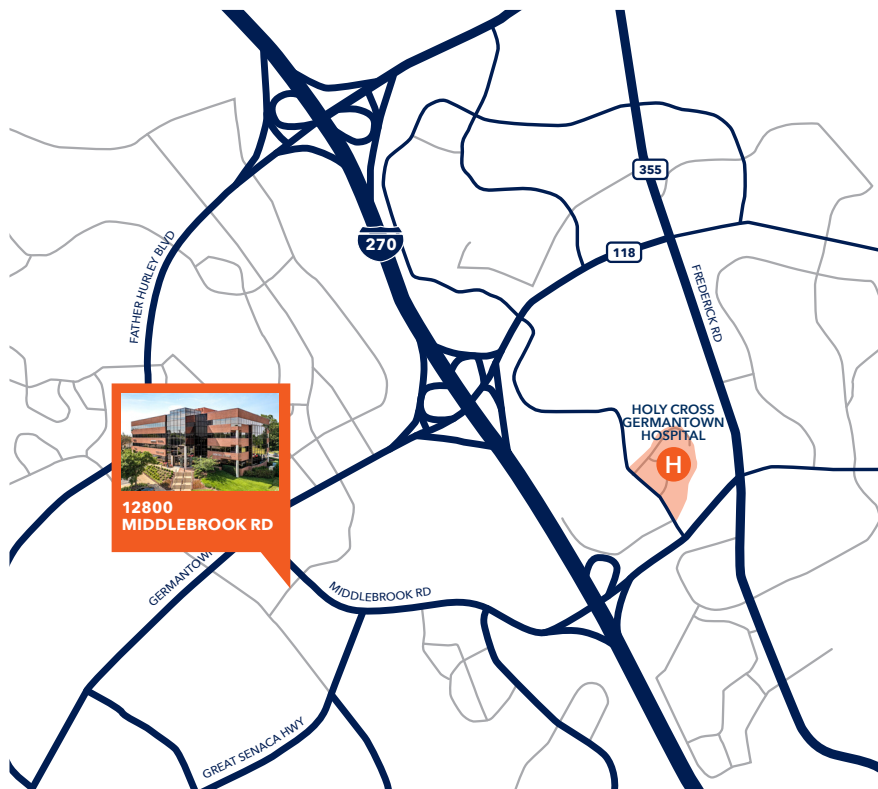
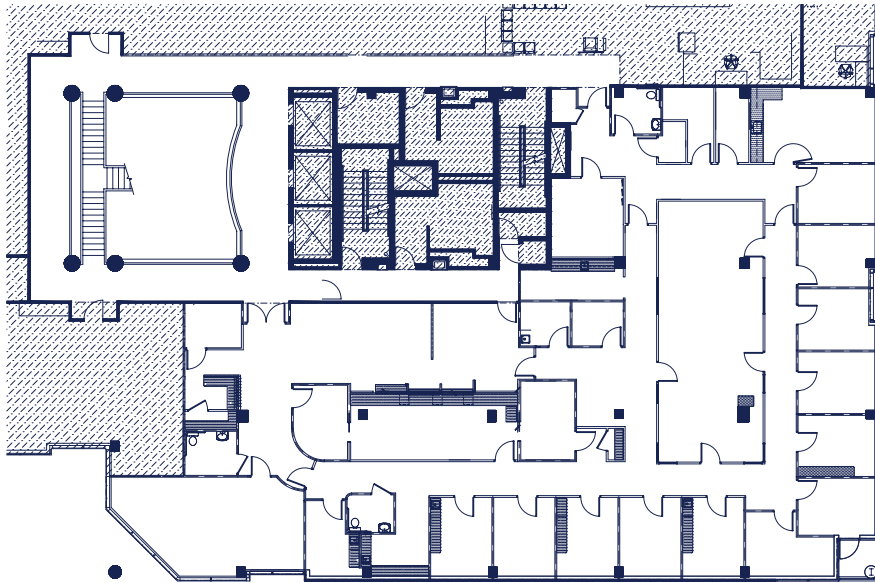
3 Bethesda Metro Center, Suite 700 // Bethesda, MD 20814
301.235.1300 // gzrealty.net

CONTACT US TODAY

MICHAEL H. FRIEDLANDER
MICHAEL@GZREALTY.NET
301.502.6868

ANDREW M. PAPANTONIOU
ANDREW@GZREALTY.NET
703.887.2513

Suite 206 | 7,896 RSF



3 Bethesda Metro Center, Suite 700 // Bethesda, MD 20814
301.235.1300 // gzrealty.net

CONTACT US TODAY

MICHAEL H. FRIEDLANDER
MICHAEL@GZREALTY.NET
301.502.6868

ANDREW M. PAPANTONIOU
ANDREW@GZREALTY.NET
703.887.2513