

# MEDICAL OFFICE SPACE FOR SALE OR LEASE



## WHAT MATTERS TO YOU >

### LOCATION

QUICK ACCESS TO I-270, CLOSE PROXIMITY  
TO HOLY CROSS GERMANTOWN HOSPITAL  
AND ADVENTIST HEALTHCARE  
GERMANTOWN EMERGENCY CENTER

### SIZE

4,208 RSF

## TREVION CORPORATE PARK

12800 MIDDLEBROOK RD, SUITE 333  
GERMANTOWN, MD 20874

### ADDITIONAL FEATURES

- Turnkey medical suite, available 11/1/2026
- Reception with dedicated check-in/check-out, 7 exam rooms with sinks, 3 private offices, nurses' station and billing area, on-site lab, kitchen / break area, rear suite entry, 3 in-suite restrooms
- Served by public bus transportation and close to the Germantown MARC Train Station
- Ample parking available for both patients and staff
- Nearby retail amenities including shopping, banking, restaurants and hotels



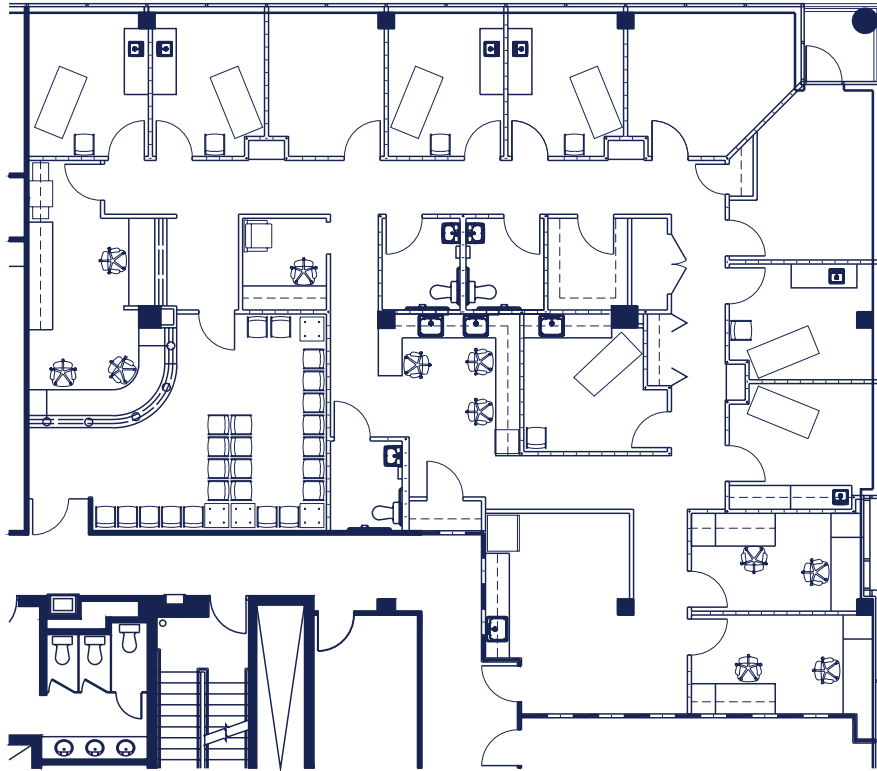
3 Bethesda Metro Center, Suite 700 // Bethesda, MD 20814  
301.235.1300 // gzrealty.net

CONTACT US TODAY

**MICHAEL H. FRIEDLANDER**  
MICHAEL@GZREALTY.NET  
301.502.6868

**ANDREW M. PAPANTONIOU**  
ANDREW@GZREALTY.NET  
703.887.2513

# Suite 333 | 4,208 RSF



3 Bethesda Metro Center, Suite 700 // Bethesda, MD 20814  
301.235.1300 // gzrealty.net

CONTACT US TODAY

**MICHAEL H. FRIEDLANDER**  
MICHAEL@GZREALTY.NET  
301.502.6868

**ANDREW M. PAPANTONIOU**  
ANDREW@GZREALTY.NET  
703.887.2513