

MEDICAL SPACE FOR LEASE

ADJACENT TO THE FUTURE INOVA ALEXANDRIA HOSPITAL



WHAT MATTERS TO YOU >

**120,000 SF
CLASS A MEDICAL
OFFICE BUILDING**

**BUILDING SIGNAGE
AVAILABLE ON I-395 FOR
FULL FLOOR USER**

WESTEND MEDICAL OFFICE BUILDING

ALEXANDRIA, VA

ADDITIONAL FEATURES

- 52-acre multi-use development on former Landmark Mall site in Alexandria, Virginia
- 22,000 SF floor plates with ceiling heights (11'-7" slab to slab) and column free space.
- Numerous residential offerings, innovative retail and food & beverage options, all among 4+ acres of communal open space and parks
- Gurney-sized elevators provide safe and easy patient transport



CONTACT US TODAY

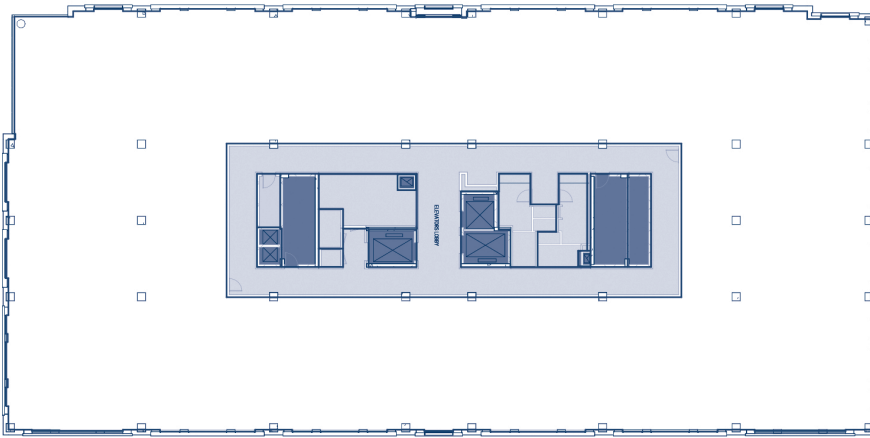
PETER G. PAPANTONIOU
PETER@GZREALTY.NET
703.395.2924

NORA E. BOWEN
NORA@GZREALTY.NET
703.856.0952

3 Bethesda Metro Center, Suite 700 // Bethesda, MD 20814
301.235.1300 // gzrealty.net

ADRIAN A. DOMINGUEZ
ADRIAN@GZREALTY.NET
703.856.0952

Floors 2, 3, 4, 5, & 6 | 22,000 RSF per floor



Alexandria, VA Healthcare Demographics

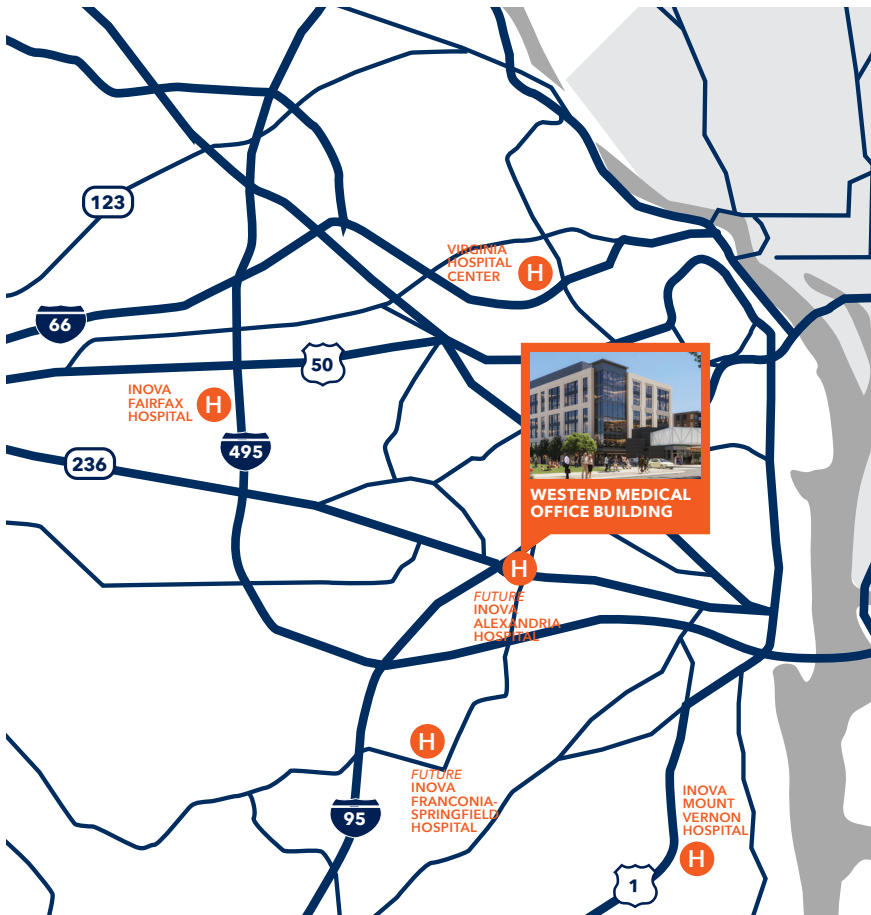
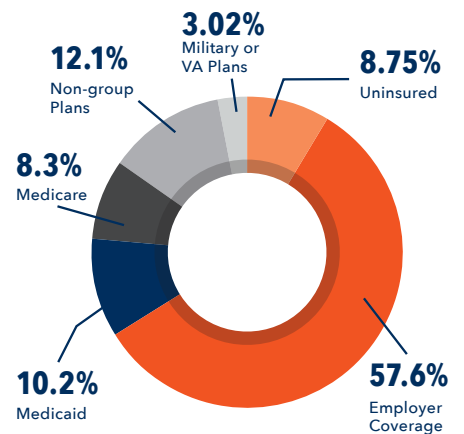
POPULATION	MEDIAN AGE
156,788	37.5
AVERAGE INCOME	AGE 65+
\$113,638	14%

Patient to Clinician Ratio

PRIMARY CARE PHYSICIAN RATIO

1,248 to 1

Payer Mix



CONTACT US TODAY

PETER G. PAPANTONIOU
PETER@GZREALTY.NET
703.395.2924

NORA E. BOWEN
NORA@GZREALTY.NET
703.856.0952

3 Bethesda Metro Center, Suite 700 // Bethesda, MD 20814
301.235.1300 // gzrealty.net

ADRIAN A. DOMINGUEZ
ADRIAN@GZREALTY.NET
703.856.0952