

# MEDICAL OFFICE SPACE FOR SALE OR LEASE



## WHAT MATTERS TO YOU >

### LOCATION

JUST STEPS FROM INOVA  
LOUDON HOSPITAL

### SIZE

2,723 SF

## 19490 SANDRIDGE WAY

SUITE 70  
LEESBURG, VA 20176

### ADDITIONAL FEATURES

- Built Out Medical Suite
- Includes four exam rooms, multiple offices, two procedure rooms, waiting room/reception area, in suite restroom and staff lounge
- Modern, recently renovated medical office with multiple exam rooms, including sinks, in place
- Ample free surface level parking available via surface level parking lot.
- Professionally managed medical condominium building
- Easy access to Route 7



**GITTLESON  
ZUPPAS  
PAPANTONIOU**  
MEDICAL REALTY

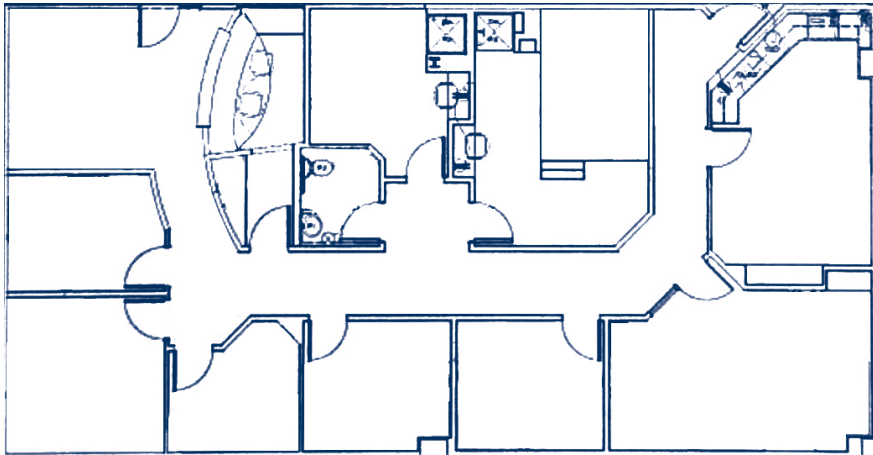
3 Bethesda Metro Center, Suite 700 // Bethesda, MD 20814  
301.235.1300 // [gzrealty.net](http://gzrealty.net)

CONTACT US TODAY

**J. WINSTON WILLIAMS, III**  
[WINSTON@GZREALTY.NET](mailto:WINSTON@GZREALTY.NET)

**ANDREW PAPANTONIOU**  
[ANDREW@GZREALTY.NET](mailto:ANDREW@GZREALTY.NET)

# Suite 70 | 2,723 SF



3 Bethesda Metro Center, Suite 700 // Bethesda, MD 20814  
301.235.1300 // [gzrealty.net](http://gzrealty.net)

CONTACT US TODAY

**J. WINSTON WILLIAMS, III**  
[WINSTON@GZREALTY.NET](mailto:WINSTON@GZREALTY.NET)

**ANDREW PAPANTONIOU**  
[ANDREW@GZREALTY.NET](mailto:ANDREW@GZREALTY.NET)