

MEDICAL OFFICE SPACE FOR LEASE



WHAT MATTERS TO YOU >

LOCATION

LOCATED JUST MINUTES FROM HCA
RESTON HOSPITAL CENTER WITH
IMMEDIATE ACCESS TO ELDEN STREET
AND FAIRFAX COUNTY PARKWAY

TURNKEY MEDICAL SUITE

1,677 SF FIRST-FLOOR MOVE-IN
READY MEDICAL OFFICE

171 ELDEN STREET

SUITE 100
HERNDON, VA 20170

ADDITIONAL FEATURES

- First-floor location with easy patient access
- Retail visibility and exterior signage opportunity
- Double glass-door entry directly off the main lobby
- Large reception and waiting area
- Six private exam rooms
- Break room and separate staff entrance
- Ample storage throughout
- Abundant free and unreserved parking



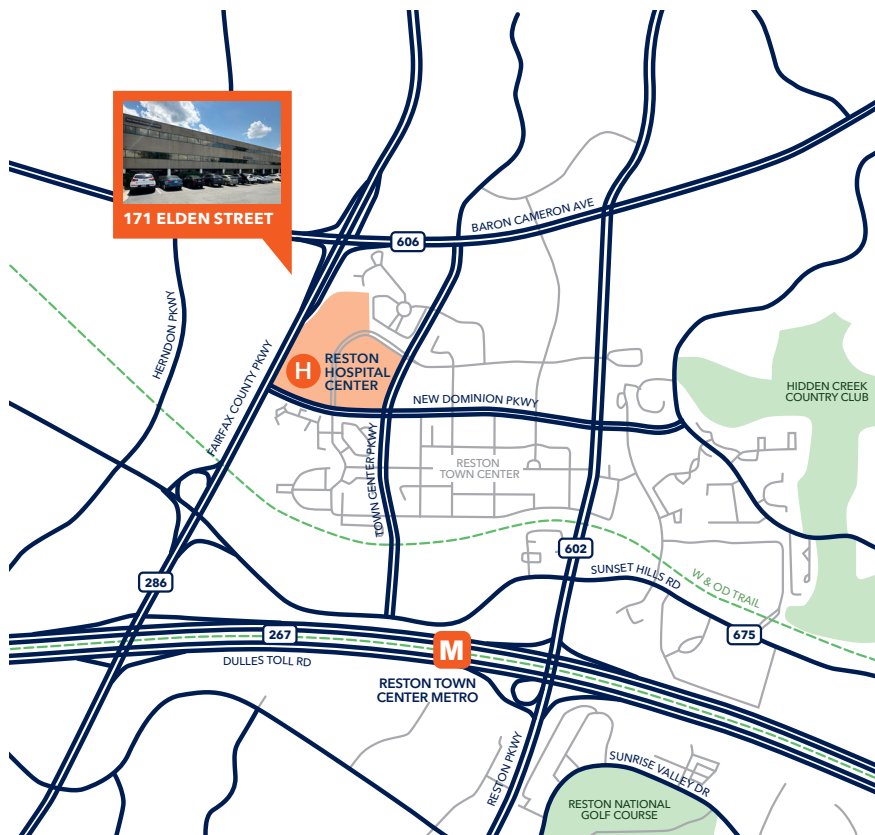
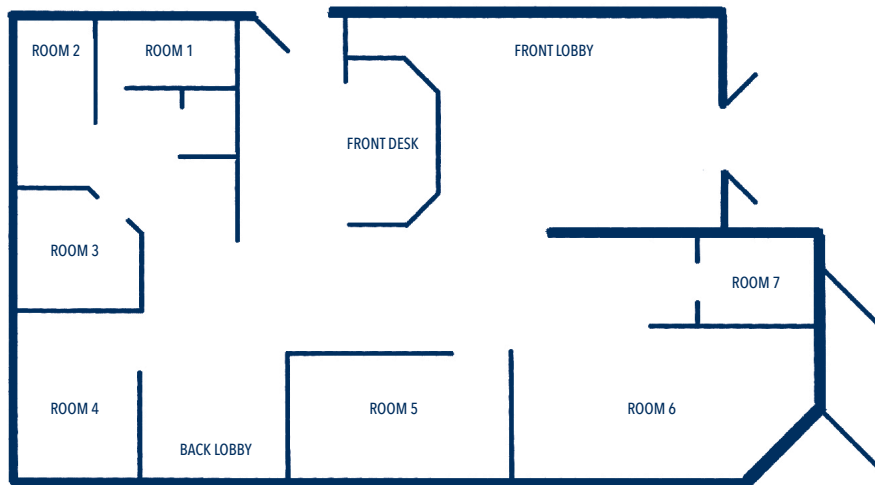
3 Bethesda Metro Center, Suite 700 // Bethesda, MD 20814
301.235.1300 // gzrealty.net

CONTACT US TODAY

MICHAEL FRIEDLANDER
MICHAEL@GZREALTY.NET
301.502.6868

ANDREW PAPANTONIOU
ANDREW@GZREALTY.NET
703.887.2513

Suite 100 | 1,677 SF



3 Bethesda Metro Center, Suite 700 // Bethesda, MD 20814
301.235.1300 // gzrealty.net

CONTACT US TODAY

MICHAEL FRIEDLANDER
MICHAEL@GZREALTY.NET
301.502.6868

ANDREW PAPANTONIOU
ANDREW@GZREALTY.NET
703.887.2513